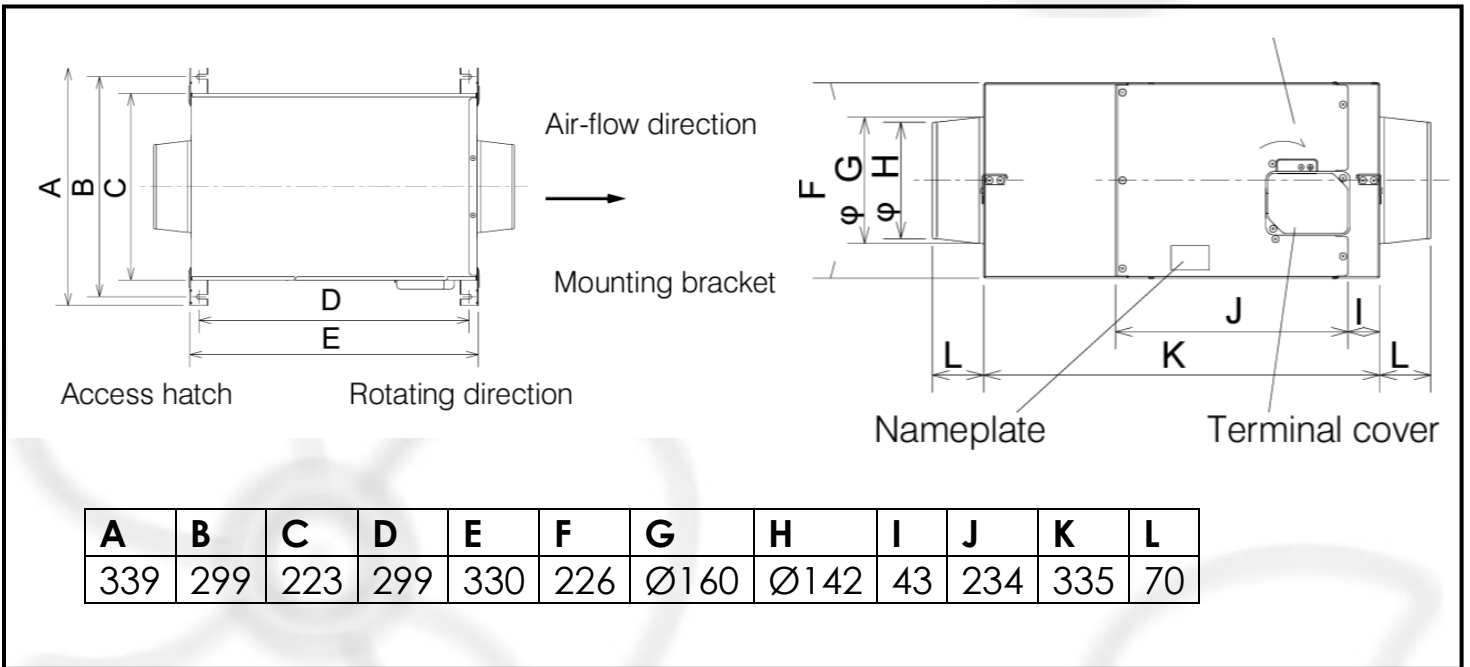
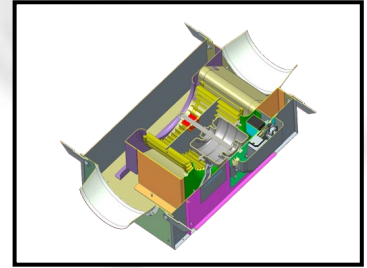
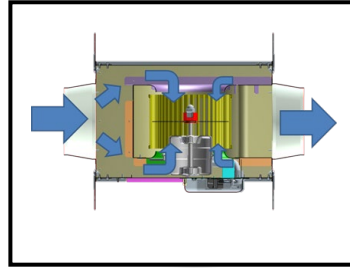
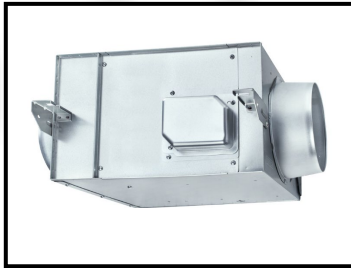


Technical Data Sheet

Mitsubishi 150Ø Inline Fan

V-15ZMWP-E 1Ø In-Line Duct Mounted Fan



Sturdy, very quiet & reliable, the Mitsubishi Electric Centrifugal In-Line Fan is the ideal ventilation solution for a wide range of commercial & domestic applications including living rooms, toilets, changing rooms, meeting rooms, offices, storage areas & heat transfer systems. Low operation noise, high volume air extraction for this in-line range.

- High airflow, quiet operation
- Adjustable/removable mounting brackets
- Two speed selectable
- Galvanised steel casing
- Removable cover for easy maintenance
- Operating range -15 to 40°C

Fan Details

Impellers: Centrifugal Impeller

Free Air Fan Performance: 340m³/ hr 94l/sec

Installed decibel rating: 25 DB(A) @ 3m

Power Consumption: 47 watts

Casing: Low profile compact casing manufactured from galvanised sheet steel.

Model – V-15ZMWP-E

Rated Voltage – 230V

Frequency – 50 Hz

Rated Current – High 0.21 Low 0.18 A

Power Consumption - 47 W / 32W

Airflow Rate - 1/s 94 High 79 Low

Noise (dBA) – 28 /25 dBA

Connecting Duct - Ø 150

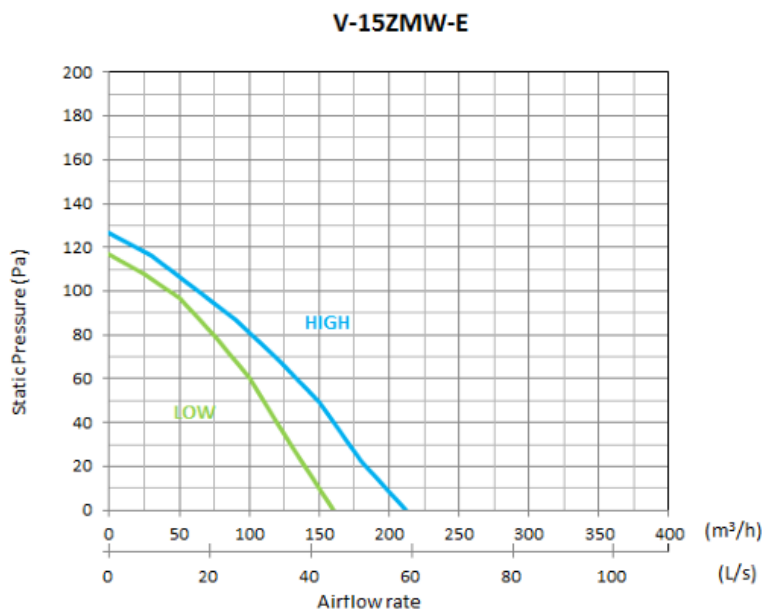
Weight kg – 6

Temperature --15 to 40°C

Relative Humidity - <90%

Less than 260mm in height

Wool glass noise absorption pads



NOTES

Quietest In-line Fan Range in NZ!*1 - High Airflow with Low Noise

The advanced air duct design allows air to be distributed evenly either side of the fan and in doing so reduces the noise of the unit.

The in-line fan can maintain a high air flow rate while operating down to a low 18.5 dBA*2.

The in-line fan sits between ductwork, allowing the unit to be installed away from the extraction point, decreasing noise heard by the occupant, ideal for environments that are noise sensitive such as meeting rooms, offices, libraries and living rooms, or when there is limited space above the extraction point.

1 Year Warranty