

low profile ducting

**MANROSE®**



**LOW PROFILE DUCTING RANGE**

[www.simx.co.nz](http://www.simx.co.nz)

“ducting solutions to suit every application”

# Modular Flat Channel Ventilation Systems



The Manrose range of low profile modular ducting systems include the most comprehensive range of flat channel ducting, connectors, reducers and accessories, offering you reliable ducting solutions to suit every application.

Designed with significant advantages over conventional round systems, low profile ducting is easily concealed when installed along the top of wall units.

It can also be fitted in ceiling voids and cavity walls, providing versatility whilst remaining unobtrusive. All Manrose system parts and channels are made from flame-retardant material.

## Four Low Profile System Sizes

- **110mm x 54mm:** (equivalent to 100mm round diameter). Suitable for applications requiring low extraction rates, such as ventilation of laundries and toilets. With a 5300mm<sup>2</sup> cross-section it provides efficient ducting for short, straight runs connecting to a 100mm round spigot.
- **204mm x 60mm:** (equivalent to 125mm round diameter). Suitable for ducting of range hoods with 100, 125 or 150mm round exhaust spigots. The flat channel cross section of 11200mm<sup>2</sup> increases efficiency.
- **220mm x 90mm:** (equivalent to 150mm round diameter). Suitable for high performance extraction or supply. The flat channel cross section of 18576mm<sup>2</sup> makes it highly efficient and higher extraction rates are achieved.
- **300 x 25mm:** For applications where space is very limited.



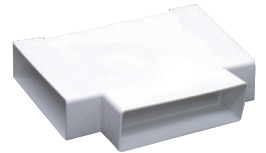
## FLAT CHANNEL 1.5M LONG

	Size (mm)	Order Code
<span style="color: blue;">■</span>	110 x 54	DCT0013
<span style="color: magenta;">■</span>	204 x 60	DCT0519
<span style="color: orange;">■</span>	220 x 90	DCT1443
<span style="color: green;">■</span>	300 x 25	DCT1460



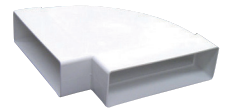
## HORIZONTAL T-PIECE CONNECTOR

	Size (mm)	Order Code
<span style="color: blue;">■</span>	110 x 54	DCT1479
<span style="color: magenta;">■</span>	204 x 60	DCT1114



## HORIZONTAL 90° BEND

	Size (mm)	Order Code
<span style="color: blue;">■</span>	110 x 54	DCT0125
<span style="color: magenta;">■</span>	204 x 60	DCT0524
<span style="color: orange;">■</span>	220 x 90	DCT1448
<span style="color: green;">■</span>	300 x 25	DCT2097



## HORIZONTAL 45° BEND

	Size (mm)	Order Code
<span style="color: green;">■</span>	300 x 25	DCT2098



## CONNECTOR

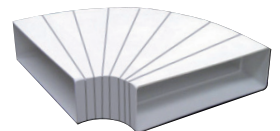
	Size (mm)	Order Code
<span style="color: blue;">■</span>	110 x 54	DCT0014
<span style="color: magenta;">■</span>	204 x 60	DCT0520
<span style="color: orange;">■</span>	220 x 90	DCT1442
<span style="color: green;">■</span>	300 x 25	DCT1459



## ADJUSTABLE HORIZONTAL BEND

	Size (mm)	Order Code
<span style="color: magenta;">■</span>	204 x 60	DCT1480

Cut to required angle



## VERTICAL 90° BEND

	Size (mm)	Order Code
<span style="color: blue;">■</span>	110 x 54	DCT0126
<span style="color: magenta;">■</span>	204 x 60	DCT0525
<span style="color: orange;">■</span>	220 x 90	DCT1447
<span style="color: green;">■</span>	300 x 25	DCT2099



## VERTICAL 45° BEND

	Size (mm)	Order Code
<span style="color: green;">■</span>	300 x 25	DCT1455



## LOW PROFILE DUCTING RANGE

“ducting solutions to suit every application”



# Manrose Low Profile Ducting Range



## ELBOW BEND (RECT:100mm RND)

Size (mm)	Order Code
110 x 54	DCT0124 (m)
110 x 54	DCT0015 (f)
204 x 60	DCT0521
220 x 90	DCT1444*
300 x 25	DCT2095

(m) = male (f) = female



## ELBOW BEND (RECT:125mm RND)

Size (mm)	Order Code
204 x 60	DCT0522
220 x 90	DCT1440*
300 x 25	DCT2096

\*Rotating offset spigot



## ELBOW BEND (RECT:150mm RND)

Size (mm)	Order Code
204 x 60	DCT0523
220 x 90	DCT1441*

\*Rotating offset spigot



## DOUBLE AIRBRICK

Size (mm)	Order Code
232 x 137	DCT1450



## DOUBLE AIRBRICK ADAPTOR

Size (mm)	Order Code
220 x 90:232 x 138	DCT1451



## AIRBRICK INSERT (204 x 60mm)

Horizontal

Size (mm)	Order Code
204 x 60	DCT0137

Duct connector requires the following reducer or connector.

110 x 54mm requires Reducer DCT0136

204 x 60mm requires Connector DCT0520

Vertical

Size (mm)	Order Code
204 x 60	DCT1414

Comes complete with duct connection as pictured.



## SHORT ADAPTOR (RECT:150mm RND)

Size (mm)	Order Code
110 x 54	DCT0131 (m)
110 x 54	DCT0127 (f)

(m) = male (f) = female



## ADAPTOR (RECT: RND)

Size (mm)	Order Code
110 x 54:100mm	DCT1482
204 x 60:125mm	DCT0526
220 x 90:150mm	DCT1446
300 x 25:100mm	DCT1461



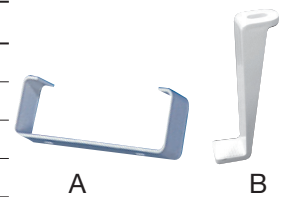
## WALL PLATE (RECT)

Size (mm)	Order Code
110 x 54	DCT0016
204 x 60	DCT0528



## FLAT CHANNEL CLIPS

Size (mm)	Order Code
A: 110 x 54	DCT0134
A: 204 x 60	DCT0527
B: 220 x 90	DCT1445*
B: 300 x 25	DCT1458*



\*Two clips are required to secure ducting

## FLAT CHANNEL REDUCER

To fit 204 x 60mm flat channel or airbrick

Size (mm)	Order Code
110 x 54	DCT0136
204 x 60	DCT1452
300 x 25	DCT1456



## DOUBLE AIRBRICK REDUCER

Connects Double Airbrick (DCT1450) to 100, 125 & 150mm round

Size (mm)	Order Code
235 x 140	DCT1453



## LOW PROFILE DUCTING RANGE

**MANROSE** Proven Reliable Solutions

# Round Ducting And Accessories

## ALUDUCT - ALUMINISED FLEXIBLE DUCT

Spiral wire reinforced laminate construction. Properties include: vapour-proof, fire resistant, aluminium/polyester laminate, silver finish, non collapsing, non rotting, retains extended length. Temp. range -30°C to 140°C.

Size (mm)	Length (m)	Order Code
Ø 100	1.5	DCT0357
Ø 125	1.5	DCT0358
Ø 150	1.5	DCT0359

Size (mm)	Length (m)	Order Code
Ø 100	3	DCT0328
Ø 125	3	DCT0329
Ø 150	3	DCT0330

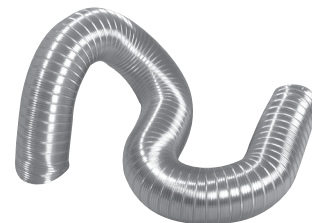


## SEMIDUCT - SEMI-RIGID DUCT

Flexible but strong corrugated aluminium, silver finish, spiral wound with a unique interlocked and knurled continuous seam. Light yet self-supporting over long lengths. Temperature range: -30°C to 250°C.

Size (mm)	Length (m)	Order Code
Ø 100	1.5	DCT0333
Ø 125	1.5	DCT0334
Ø 150	1.5	DCT0335

Size (mm)	Length (m)	Order Code
Ø 100	3	DCT0114
Ø 125	3	DCT0115
Ø 150	3	DCT0116



All ducting complies with NZ Building Code fire rating requirements.

## WHITE FINISH SOLID TUBE GALVANISED

Size (mm)	Order Code
Ø 100 x 0.9m	DCT0151
Ø 125 x 0.9m	DCT0146
Ø 150 x 0.9m	DCT0147



## WHITE FINISH SOLID TUBE PLASTIC

Size (mm)	Order Code
Ø 100 x 1m	DCT1424
Ø 125 x 1m	DCT1425
Ø 150 x 1m	DCT1426
Ø 150 x 2.5m	DCT3527
Ø 150 x 5m	DCT3530



## STRAIGHT DUCT CONNECTOR

Size (mm)	Order Code
Ø 100	DCT0159 (PVC)
Ø 125	DCT0037 (GALV)
Ø 150	DCT0059 (GALV)
Ø 150	DCT3528 (PVC)



## LOW PROFILE EXTERNAL GRILLE

Size (mm)	Order Code
Ø 100	DCT2200
Ø 125	DCT2201
Ø 150	DCT2202



## STANDARD EXTERNAL GRILLE

Size (mm)	Order Code
Ø 100	DCT2206



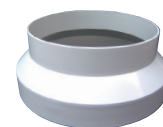
## WALL PLATE (RND)

Size (mm)	Order Code
Ø 100	DCT0148
Ø 125	DCT0149
Ø 150	DCT0150



## REDUCING CONNECTOR

Size (mm)	Order Code
Ø 125: 100	DCT2067
Ø 150: 125	DCT2066



For the full range of **MANROSE** Fans, Ducting, Grilles and Accessories visit our websites.  
[www.simx.co.nz](http://www.simx.co.nz) [www.manrose.com.au](http://www.manrose.com.au)

We reserve the right to alter specifications without notice.

Dealer details: