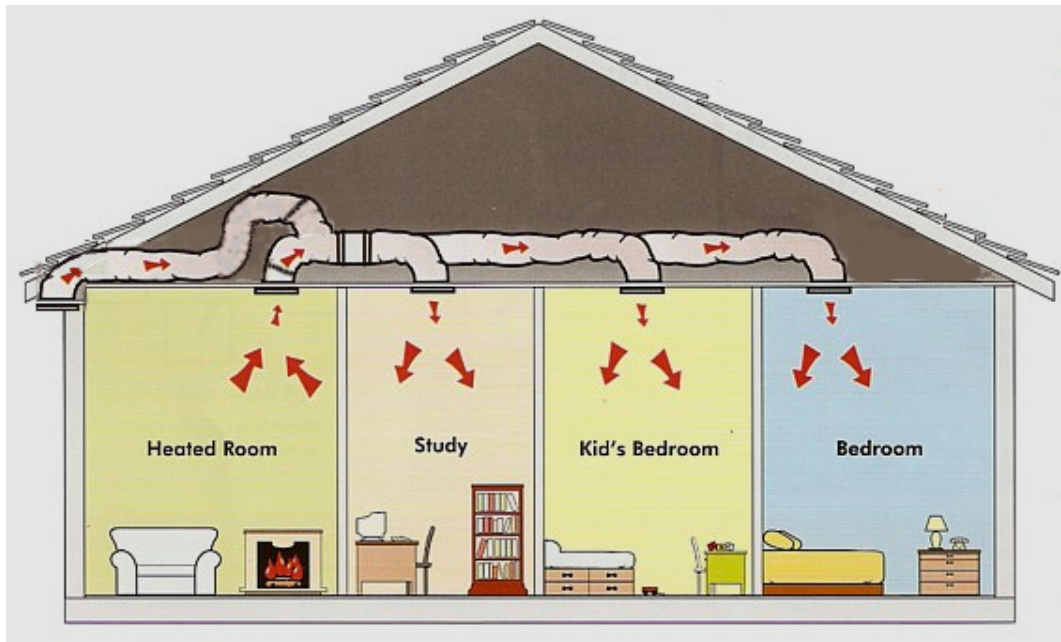


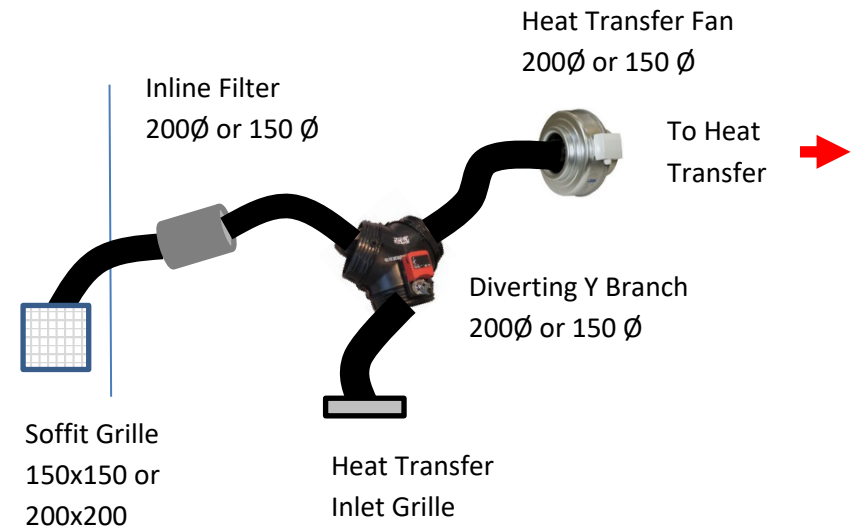


# Airflow Engineering

## THE HVAC SHOP



QTY	CONTENTS OF KIT
1	200Ø or 150 Ø Inlet Grille (Soffit Use Only)
1	200Ø or 150 Ø Inlet Filter
1	200Ø or 150 Ø Diverting Y Branch
1	3m Nude Flex 200Ø or 150Ø
1	Roll PVC Duct Tape



Unless otherwise stated all dimensions in millimetres	DRAWN: Cherry Browne	AIRFLOW ENGINEERING (SI) LTD		Airflow Engineering Ph 03-365-6278 sales@airflo.co.nz
JOB: SUMMER VENT ADD ON KIT		SCALE: NTS	SHEET 1 of 2	

## INSTALLATION

Choose the inlet location on the soffit for the fresh air inlet and cut a hole and insert grille.

CARE MUST BE TAKEN TO CUT AN ACCURATE AND NEAT HOLE. This inlet should be located on the cool side of the house.

Note: Choose a location that is protected by the weather but also allows enough distance to the existing heat transfer system on the basis that 3m of ducting is supplied for connection.

Cut the existing duct between the fan motor and the heat transfer inlet grille at the midway point.

Attach the heated room duct (that you have just cut into) onto the Y branch damper.

Connect the Y branch damper output leg (*one without damper blade*) to the heat transfer fan.

Connect the 'Outside' grille to the Y branch damper using the new 3m length of ducting supplied.

Cut this 3m duct in half at a convenient point and attach the duct to either end of the filter – please observe the directional airflow arrow on the filter.

Tape all connections securely.

Note: When the summer feature is working the lounge/warmed room inlet will be switched off via the damper and therefore will NOT receive the cooler air directly from the outside. However due to an imbalance of air pressure a natural re-circulation occurs throughout the home.

Enjoy your system!

## IMPORTANT

All installation work should be performed by a registered electrician and comply with local wiring regulations.