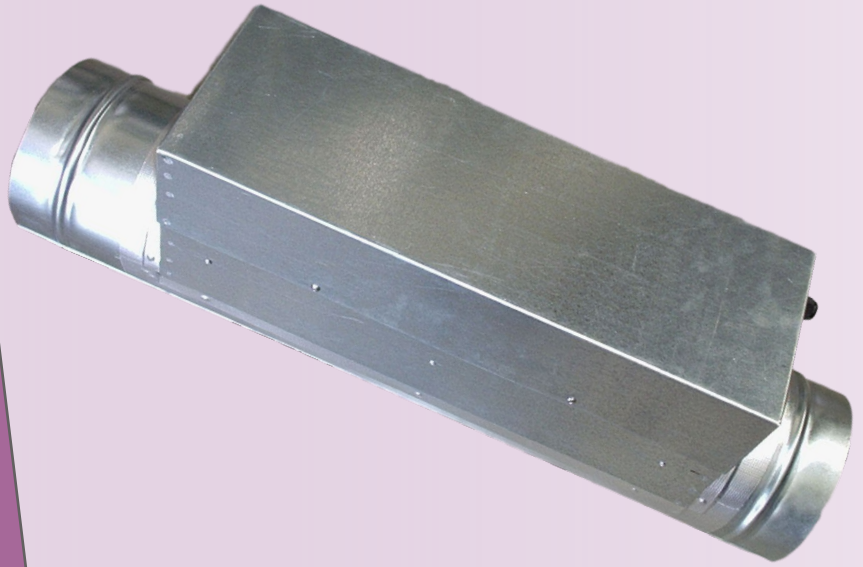


Airflow Circular Electric Duct Heater

Airflow circular duct heaters comprise of electric resistance elements, mounted in a galvanised steel casing.

Every heater is fitted with a high temperature safety cut out, differential air pressure switch and digital thermostat.

Manufactured by Airflow Engineering (SI) Ltd – The HVAC Shop.



AC300-3000FW

Air Heaters

Duct Heaters are used for heating the ventilated air supplied to individual rooms and zones. Circular electric duct heaters are also used for preheating or reheating for ventilation units.

No complicated ductwork

Duct Heaters are designed for use with round ductwork. These heaters directly connect to round duct and provide a round in, round out configuration without the need for transitions, making for easy mounting to ductwork

Direction of Airflow

The airflow may be horizontal or vertical the terminal box may be on the side or top of duct. Care must be taken to ensure the thermal cut out is near the top of the duct.

Finned Elements

Finned air heaters consist of tubular heating elements, which have a continuous fin strip rolled around the circumference of the heating element to increase the surface area and therefore increase its ability to dissipate heat.

Stainless Steel Element

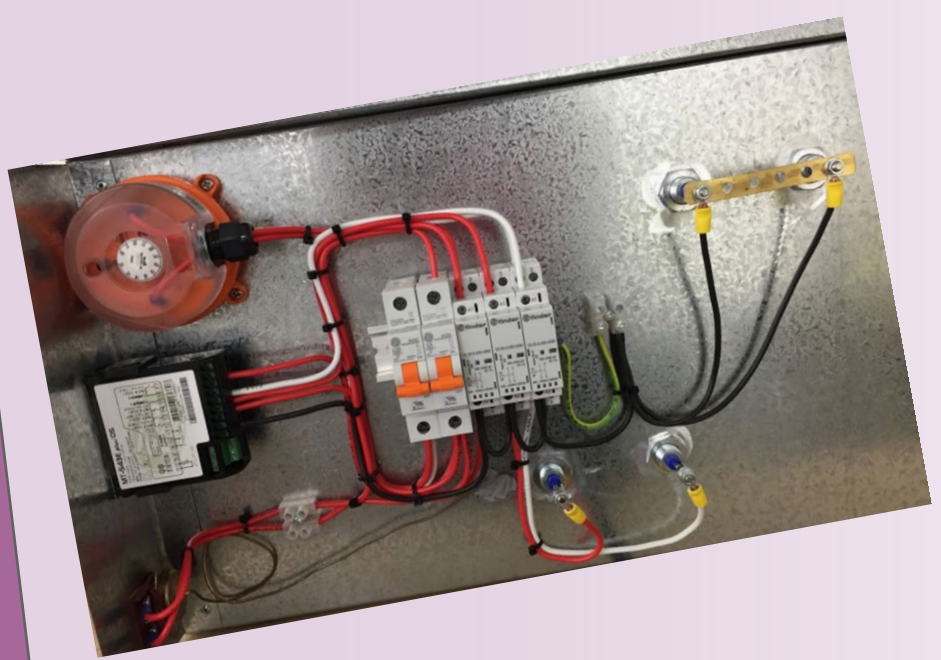
Finned heaters are constructed from 304 stainless in sheath diameters of 10.7mm

Safety Devices

Heaters are fitted with a manual reset thermal cutout for primary protection and a differential air pressure switch. Protection devices are serviceable through the heater terminal box, without removing heater from duct.

Airflow Circular Electric Duct Heater

The elements are formed and arranged to be evenly spread over the open area of the duct. They are secured into the terminal box with airtight glands. Fully wired heaters are supplied with isolators, fuses, and contactors, and wired into required stages. Two safety controls are incorporated.



AC300-3000FW

Technical parameters

Nominal Data

Part Number	AC300-3000FW
Voltage	230V
Phase (s)	1Ø
Input Power	3000 Watts
Input Current	13 Amps
Airflow (minimum)	3 m/s
Stages	1

Equipment

Element Cat Number	F886W3000 3000-Watt Element
Number of Elements	1
Manual Over Temperature Control	LM7 Fixed setting 120°C
Air Pressure Switch	Belimo Differential Pressure Switch
Air Pressure Termination Kit	Air Pressure Differential Fixing Kit
Digital Temperature Controller	Full Gauge MT-512E 2HP
Fire Retardant Duct Lining	Xcellon Foam with Fire retardant
Tube & Terminal Box	24g Galvanised Steel

Dimensions

Diameter "A"	300Ø
Length "B"	1000mm
Terminal Box Height "C"	200mm
Element Length "D"	275mm
Length of Terminal Box "E"	600mm

